

ALEF
LIGHTING



FLOODLIGHTS

STREETLIGHTS

LED TECHNOLOGY

LIGHT SOLUTION

EX

ALEF Lighting Group 2019 Catalog

FAMOOR LED Streetlight



Lasted LEDs (Bridgelux , PHILIPS , OSRAM) With a excellent housing design and superior optical performance (luminaire efficacy up to 165 lm/W) to provide excellent value and a short payback period .

Perfectly suited for any street and area lighting application. the FAMOOR Streetlight provides a wide variety of lumen packages, color temperatures and light distributions.

The economical FAMOOR offers superior value for new construction and competitive payback for area lighting retrofits.



FAMOOR LED Streetlight



100 - 150 - 200 - 240 Watt



Replace up to
250W to 600W HID/HPS

Part Number	Wattage	Lumens	LED Lm/W	Energy Saving
ALF100-LS	100	12,000	150 to 160	86%
ALF150-LS	150	18,000	150 to 160	86%
ALF200-LS	200	24,000	150 to 160	84%
ALF250-LS	250	30,000	150 to 160	84%

Perfectly suited for any street and area lighting application, the FAMOOR Streetlight provides a wide variety of lumen packages, color temperatures, and light distributions.

Dedicated Ip66 sealed optical cavities feature optically optimized lenses maximizing efficacy and control of distribution from each light engine module.

High brightness LEDs deliver exception fixture efficacy (up to 160 lm/W) in a choice of full range of superior quality color temperatures :
from 3000k to 20,000k with a typical CRI of >75

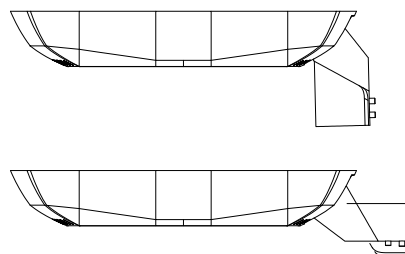
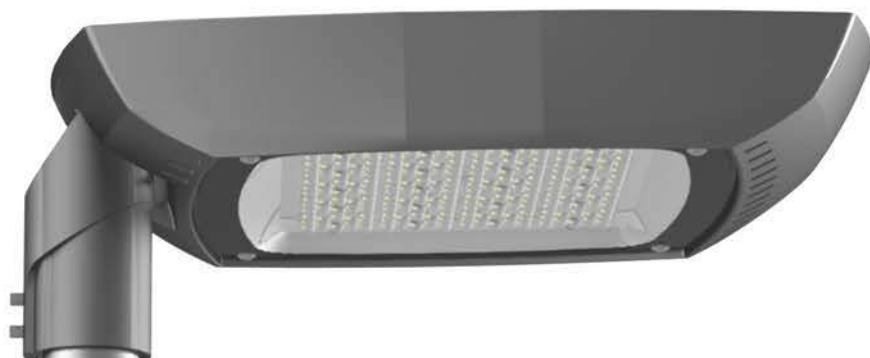
100-240V



Specifications

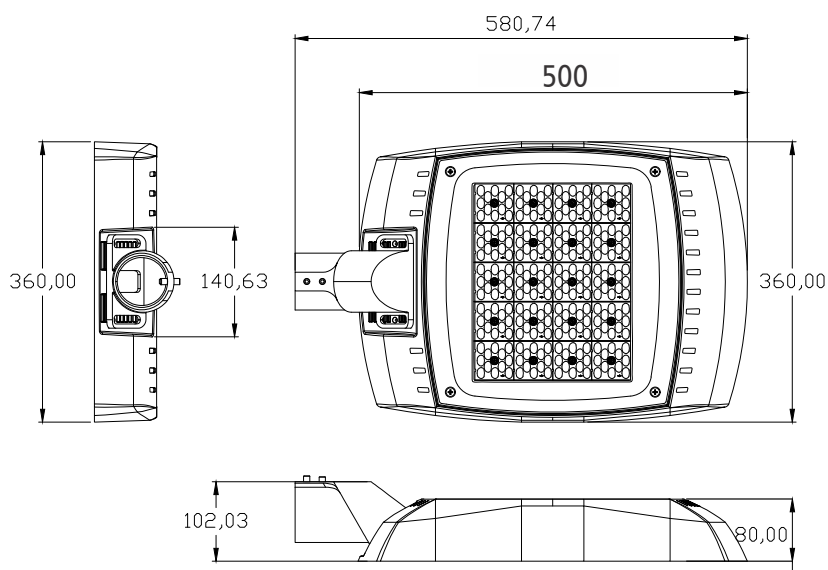
Material:	Die-Cast Aluminum
Voltage Range:	100-240VAC
IP Rating:	IP 66
Category:	Class I
Power Factor:	>95
Color Temperature:	yellow color (2500-3500k)
(3000k to 20,000k as request)	white color (4500-5500k)
LED CRiRa	>75
Beam Angle:	T II , T II , T V
Operating Temperature Range:	-25°C to +55°C
Finish Color:	Gray
Lifes Span:	50,000hours
Weight(kg):	9.5
Warranty:	3 to 5 years





BLUMAAN LED Light is designed and manufactured by ALEF LIGHTING GROUP for indoor applications(ceiling mounted, wall mounted) an outdoor applications(street, parks and...).

Ability to choose different beam angle, sturdy and strong structure, long life(50,000 hour life),availability of various lumen packages and high ingress protection (Ip66) are among the highest of this luminaire.



LED PANEL

PANEL LED 600 x 600 60W 5500 K

AREAS OF APPLICATION

- Offices
- Retail
- Hospitals
- Recreational facilities



PRODUCT BENEFITS

- Low maintenance and operation costs due to long lifetime of LED
- Very slim Iron housing (only 0.7 mm) and matt white polycarbonate frame
- Edge-lit with LCD backlight technology
- High efficiency and reliability

PRODUCT FEATURES

- Available in sizes: 600 x 600 mm
- High system efficiency: up to 100 lm/W
- Available with color temperature: 4,000 K, 6,500 K
- Color rendering index Ra: 80
- Power factor: > 0.9
- Long lifetime: up to 30,000 h



TECHNICAL DATA

Electrical data

Nominal wattage	60.00 W
Nominal voltage	220...240 V
Power factor λ	0.90
Mains frequency	50/60 Hz

Colors & materials

Body material	Aluminum/Plastic
Housing color	White
Product color	White

LED PANEL

PANEL LED 600 x 600 60W 5500 K

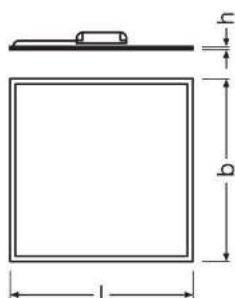
Photometrical data

Color temperature	6500 K
Luminous flux	4000 lm
Luminous efficacy	100 lm/W
Standard deviation of color matching	≤5 sdc _m
Light color (designation)	Daylight
Color rendering index Ra	80
Luminous efficacy of lamp in luminaire	100 lm/W

Light technical data

Beam angle	115 °
------------	-------

Dimensions & weight



Length	595.0 mm
Width	595.0 mm
Height	8.2 mm
Product weight	2400.00 g

Temperatures & operating conditions

Ambient temperature range	-10...+50 °C
---------------------------	--------------

Lifespan

Number of switching cycles	30000
----------------------------	-------

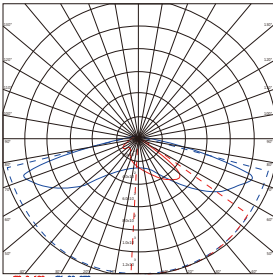
Additional product data

Mounting type	Recessed
Mounting location	Ceiling

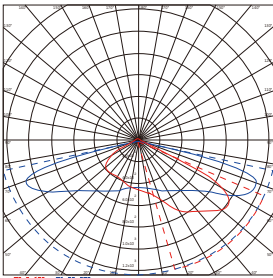


Ceiling mounted

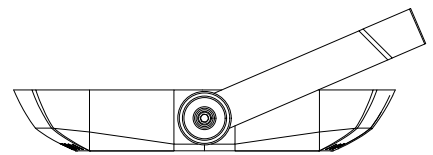
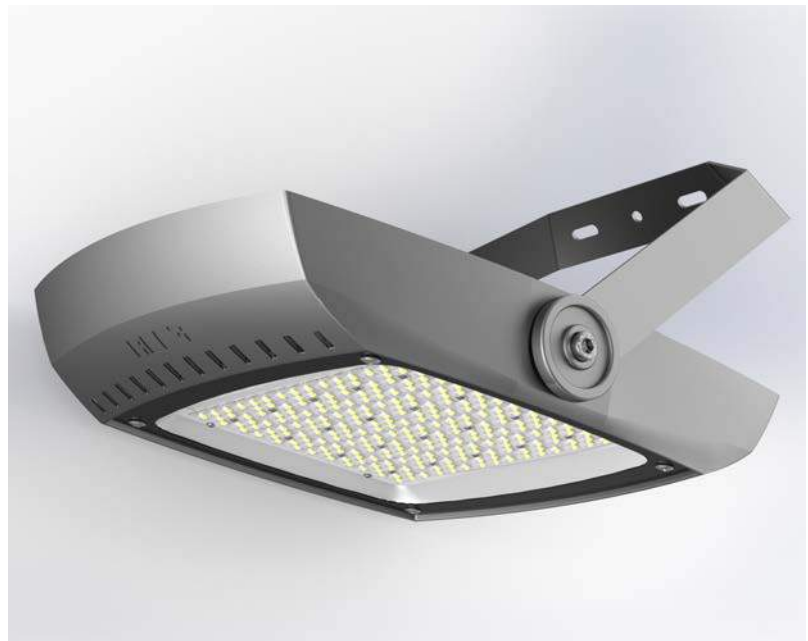
(Type II-Medium)



(Type III-Medium)



Floodlight



Specifications

Model No.	ALB_***_L_**				
Material	Aluminium Die-cast				
Power(W)	100W	125W	150W	200W	250W
Voltage Range	160V ~ 240V				
Dimension(mm)	L780*W340*H133				
Pipe Size(mm)	65MM				
Lumen efficiency	>130 Lm/w				
LED Qty.	144 PCS	144PCS	192PCS	240PCS	288PCS
CCT	yellow color (2500 – 3500) white color (4500 – 5500)				
Ra(CRI)	>75				
Protection	IP66				
Finish color	Gray				
Life span	50.000 hour				
Beam Angle	130°, 90°, 60°, T II, T III, T V				
Junction temprature	From 70 °C to 85 °C				
LED Chip Lighting efficiency	150-160 lm/w				
Lamp Lighting efficiency	>110 lm/w				
Operatin temprature range	-25 to +55 °C				
weight	8.5 kg				
Standards	IEC 60598 (Luminaries)- IEC 60926 (Electronics)- IEC 60926 (Electronics) IEC 60929 (Electronics)- IEC 60529 (Protection)				
Control Options	Motion sensor- Photocell sensor- 1,10V- DALI- 5G				
Order GUIDE	"ALB" Stand for Alef lighting Blumaan, "****" Stand for rated power "L" Stand for Led, "****" Stand for "S for streetlight, F for floodlight, C for ceiling mounted"				

ALEF Lighting Group

TEL: 021-65612755-6
021-65612955

FAX: 021-65612956

Tehran- Iran

www.aleflighting.com

Info@aleflighting.com