

## ***EVAN EX LED Floodlight***

Instruction for Installation and Utilization

دستور العمل نصب و نگهداری  
پروژکتور ضد انفجار اوان

**IMPORTANT:** Read before installation.

مهم: قبل از نصب مطالعه شود.

■ EN  
■ FA

**Roshana Fan Avari ALEF**

Tehran, Iran

**Tel: +982165612755-6**

**[www.aleflighting.com](http://www.aleflighting.com)**



- Do not open the floodlight when energised
- Read the instruction manual before installation
- The floodlight must be installed and maintained by an authorised trained person
- All modifications on this floodlight are forbidden

#### **SPECIAL CONDITION FOR SAFE USE**

When operated at ambient temperature below  $-20^{\circ}\text{C}$ , the tempered glass cover of the floodlight becomes more brittle and can only withstand impact energy of 1J. Please handle with care in low temperature environment



isolate main  
before removing cover



install in a  
well ventilated area



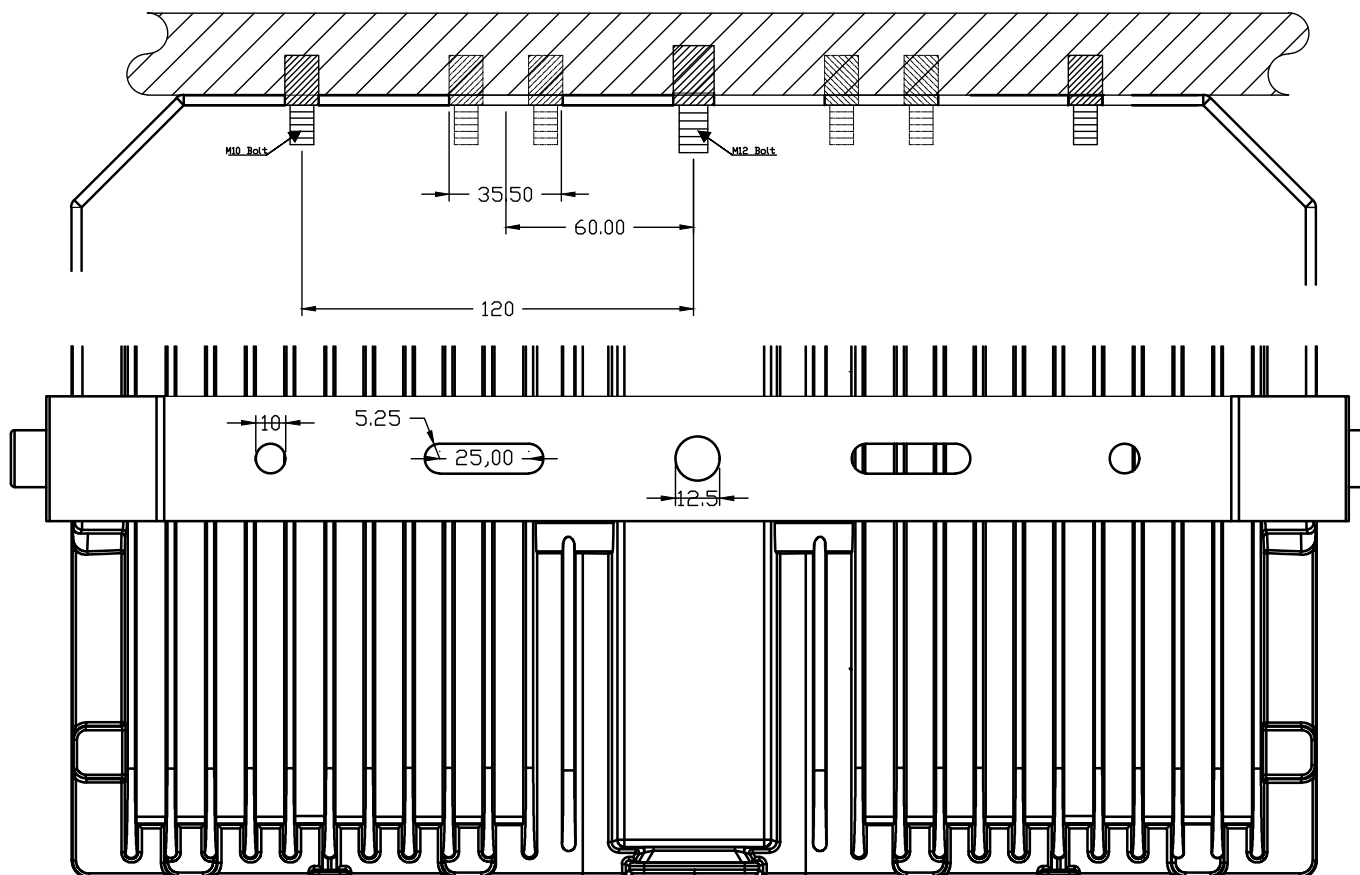
Do not continually  
stare at lamp

## **Unit Installation**

For high performance and long term reliability, the light should be installed in free air. Carefully unpack unit and properly inspect for defects before installing. Wear work gloves to prevent dirt and oil from being transferred to the luminaire

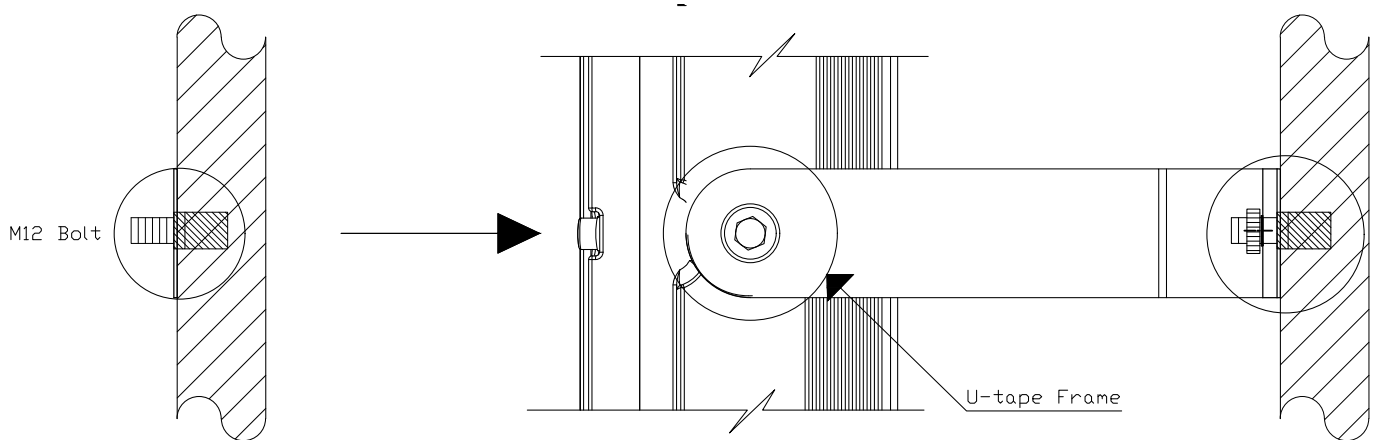
### **A: Ceiling Type**

1. According to the bracket hole distance, installed two M10 bolts on the roof.
2. Tighten the bracket from two sides to wrench tight.
3. Bolt the universal mounting bracket and tighten the M10 bolts to the field mounting point.
4. Wiring. (Connect supply wires to luminaire wire leads per the wiring diagram using methods that comply with all applicable codes.)



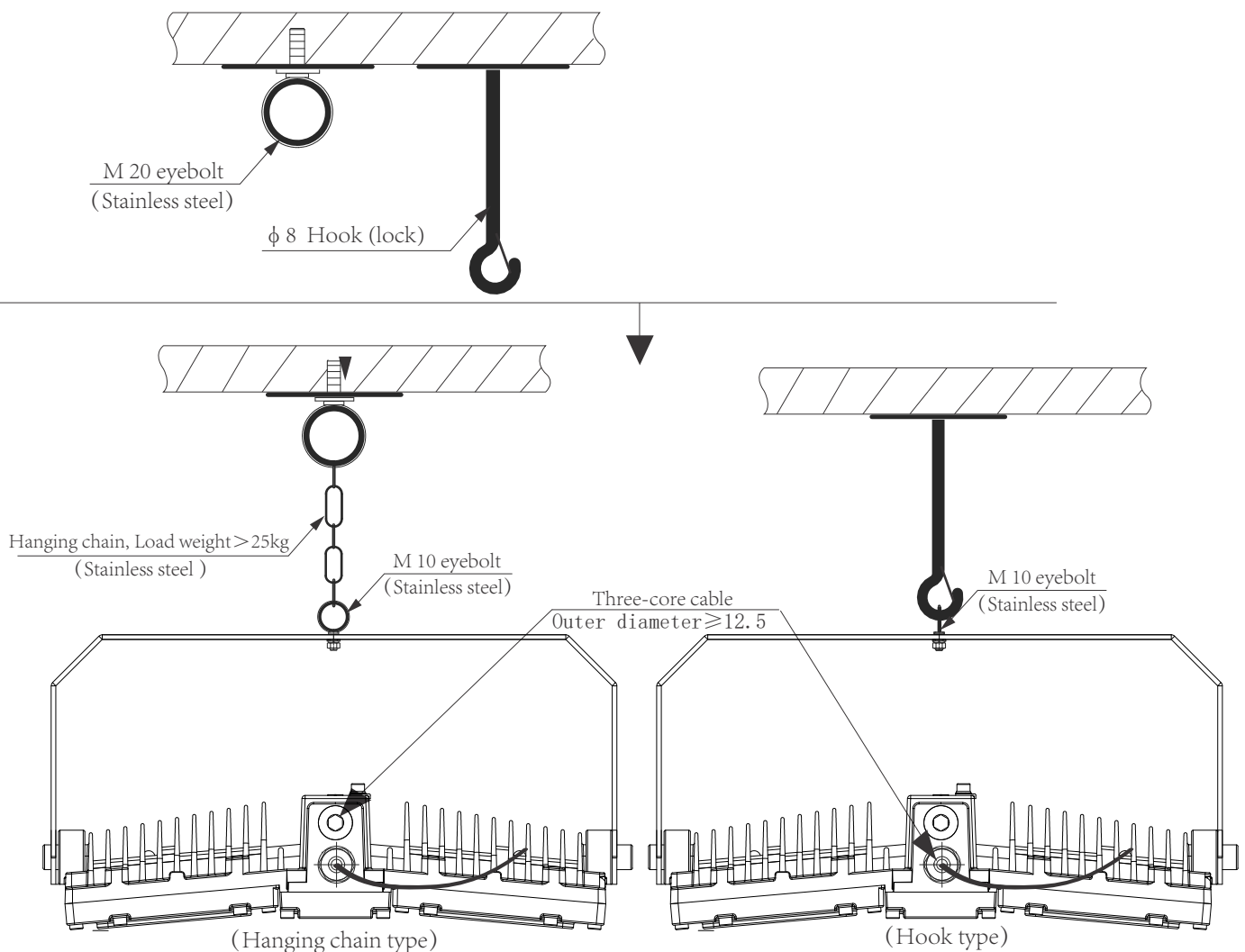
## B: Wall Type

1. According to the bracket hole distance, installed two M10 bolts on the side wall;
2. Tighten the bracket from two sides to wrench tight.
3. Bolt the universal mounting bracket and tighten the M10 bolts to the field mounting point.
4. Wiring.



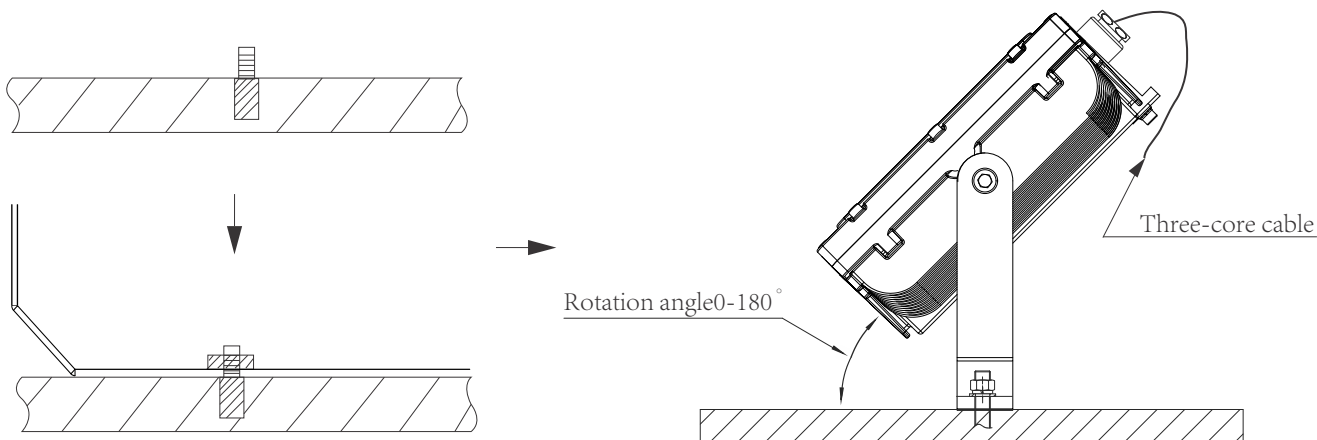
## C. Hanging Chain

1. Install a M20 eyebolt or hook on the roof;
2. Tighten the bracket from two sides to wrench tight.
3. Tighten the M10 eyebolt attached to the hanging ring to ensure the hanging ring is securely connected to the light fixture.
4. Wiring. (Connect supply wires to luminaire wire leads per the wiring diagram using

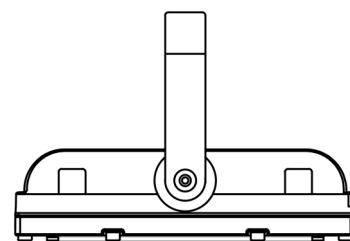
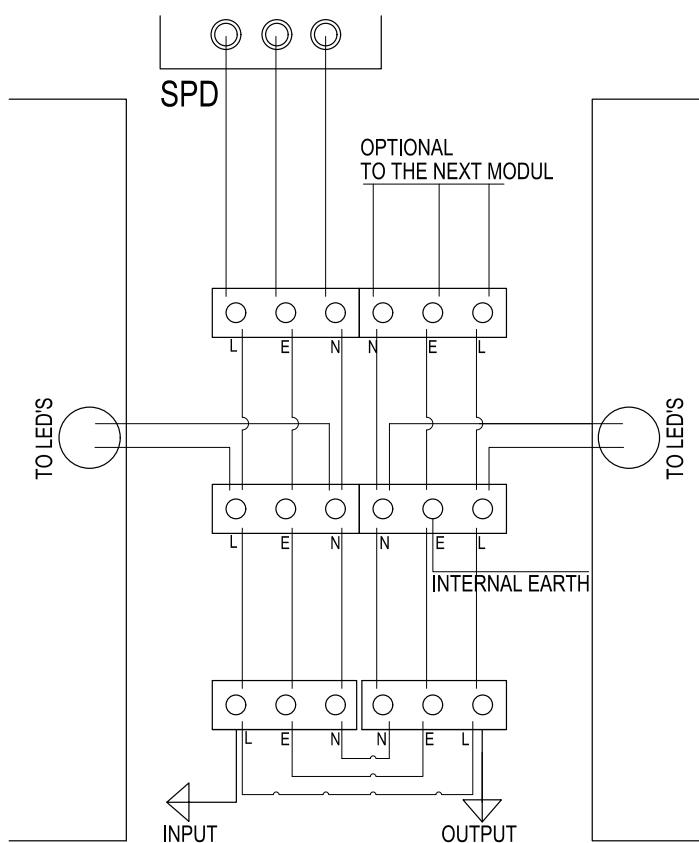


## D: Floor Type

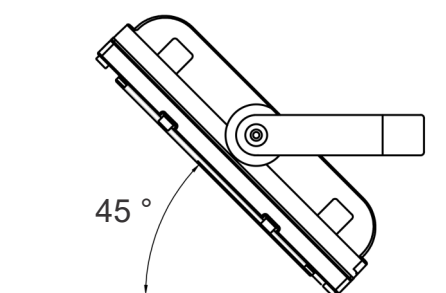
1. According to the bracket hole distance, installed two M10 bolts on the ground or pipe stand.
2. Tighten the bracket from two sides to wrench tight.
3. Bolt the universal mounting bracket and tighten the M10 bolts to the field mounting point.
4. Wiring. (Connect supply wires to luminaire wire leads per the wiring diagram using methods that comply with all applicable codes.)



## TYPICAL WIRING DIAGRAM



Flood light front face parallel to ground



Recommended maximum mounting angles from horizontal

## TROUBLESHOOTING

Symptom	Solution
Floodlight does not turn on	<ul style="list-style-type: none"><li>• Check for proper cable termination and good connection</li><li>• Verify the power supplied has the right voltage</li><li>• If connected to external controls, ensure the control is working properly</li></ul>
Floodlight is rocking	<ul style="list-style-type: none"><li>• Ensure the position locking mechanism is properly secured</li><li>• Check the mounting screws are firmly tightened</li></ul>

## **INSTALLATION INSTRUCTIONS**

- The installer and/or maintenance personnel must verify the floodlight's certification code is compatible with the environmental and authorised conditions of the site.
  - Check the power rating label to ensure the floodlight is suitable for the electrical main supply.
  - All inadequate and wrong installation or usage will render the warranty void.
  - Ensure power is turned off before installation or troubleshooting. Do not open any part of the floodlight when it is energized.
  - The floodlight has one power cable entry at the junction box that is fitted with an ATEX and IECEx approved M16 cable gland for unarmoured cable of diameter 11.0mm to 15.0mm. Second cable gland or glands of other sizes are options sold separately.
  - Open the junction box by unscrewing the 8 screws on the cover.
  - Use a 3 core power cable that is compatible with the cable gland size.
  - Strip the outer sheath at the connecting end of the cable to expose the 3 insulated wires.
  - Insert the power cable through the gland until the outer sheath appears through the cable gland bore inside the junction box.
  - Using a torque wrench spanner, tighten the outer nut of the gland with 32.5Nm installation torque to properly seal the cable in the gland.
  - Strip the insulation at the tip of the 3 insulated wires to expose the conductors for connection.
  - Connect the 3 insulated wires to the terminal block inside the junction box according to their respective positions: Live (L - brown), Neutral (N - blue) and Protective Earth (PE - Yellow/Green).
  - The terminal block is able to receive wires with cross section up to 4mm<sup>2</sup>. Ensure the bare copper of the wires are fully inserted into the terminals and the screws are sufficiently tightened.
  - Close the junction box cover and tightening the 8 screws firmly.
  - Use AISI 316 stainless steel screws to secure / mount the floodlight.
  - The LED floodlight can be turned on or restarted instantly with full brightness. No warm-up time is required.
  - Other than the junction box, no other parts of the floodlight should be opened for installation, modification or maintenance.
- 

## **MAINTENANCE**

- Electrical apparatus installed in hazardous locations has design features that make it operationally safe under normal conditions. In order to ensure that the apparatus remains serviceable the following points should be attended to on a periodical basis. The period between inspections is not fixed, but should be adjusted to suit the environmental conditions where the equipment is situated. An initial inspection after 12 months of use is suggested.
  - The causes generally are defective lamps, gross over voltage, or a failing driver, or the unit is fitted into an ambient temperature above that specified.
- 1) Ensure that all fasteners are present.
  - 2) Ensure that the enclosure is not damaged or distorted so as to prevent proper functioning of the gaskets.
  - 3) Ensure that the enclosure is not corroded such as to affect its IP rating. Any areas of damaged paint should be touched up .
  - 4) Ensure external earth bonding connections are in place and in good condition.
  - 5) Ensure that all entry devices are in good condition and securely tightened.
  - 6) Ensure that the certification label is present and legible.
  - 7) Ensure that the lamp glass is not damaged. Ensure that the location where the equipment is fitted is free from flammable gas or dust. De-energise the unit and allow time to cool.
- With the enclosure open:
- 8) There should be no significant sign of internal moisture. If there are signs of water ingress any likely ingress points should be rechecked.
  - 9) Ensure that all terminals are in good condition i.e. no cracks or breakage.
  - 10) Ensure that all terminals are tightened to the manufacturer's specified torque.
  - 11) With the cover refitted, ensure that all fasteners are tightened to the specified torque.